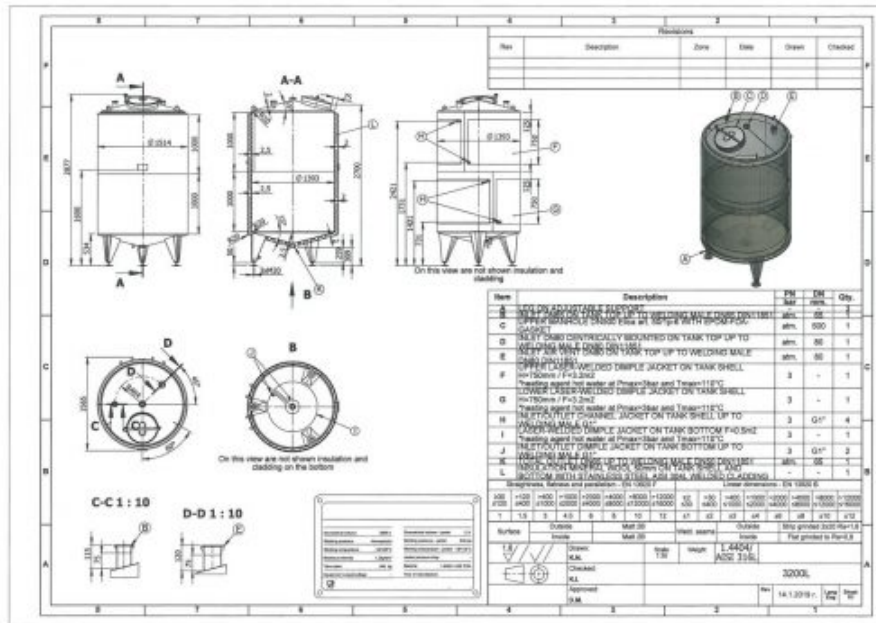




# 3200 liter i syrafast



## Description of the article

- Article type: brand new storage tank
- Capacity: 3.200 L
- Maximal density of the product: 1.200 kg/m<sup>3</sup>
- Ra inner weld: 0,80 µ
- Finish stainless steel: 2b
- Working pressure in tank: ATM - atmosferic
- Max. working temperature. 130 °C
- Min. working temperature: -10 °C
- In contact with the product: SS AISI 316L (V4A)
- Model: vertical
- Configuration. insulated with heat-exchanger
- Heat exchanger: yes
- Insulation: yes
- Agitator: yes, optional
- Mobile tank: no
- Top type: conical 15 °
- Shape of tank: cylindrical
- Bottom type: conical 15 °



- Wall type: conical 15 °
- Total discharge: yes
- Fixation points: 3 adjustable feet

### Heat Exchanger (HE)

- Type of HE on the cylinder: dimple-jacket
- Position HE: the complet cilinder
- Number of sections: 2
- Water pressure HE: 3 Bar
- Steam pressure HE: 0,50 Bar
- Contact surface cylinder. 6,40 m<sup>2</sup>
- Connection HE: 1" BSP
- Working temperature HE cylinder: 110 °C
- Type of HE on the bottom: dimple-jacket
- Connection of the bottom to the cylinder: buiten isolatie
- Water pressure HE. 3 Bar
- Steam pressure HE: 0,50 Bar
- Contact surface bottom: 0,43 m<sup>2</sup>
- Connection HE: 1" BSP
- Working temperature HE bottom: 110 °C

### Overview materials

- Mat. wet parts: SS AISI 316L (V4A)
- Heat exchanger: RVS - 304 with rockwool insulation
- Insulation material: Rockwool
- Outer jacket (ornamental wall): RVS 304L
- Manway(s): RVS 316
- Gasket manway(s): EPDM
- Fixation point(s): RVS 304L

### Equipment

- Suitable for food industry: yes
- Documents included: yes, optional
- Technical drawing included. yes
- Registration plate on the tank: yes
- with inspection of: TUV
- Flange for agitator. no
- Number of manways: 1
- Position manway: at the top
- Manway 1. Ø 500 mm
- Spray ball: yes, optional
- Tank outlet: inside Ø 65 mm



- Outlet type: DIN11851 male
- Total outlet valve: yes, optional

#### Wall thicknesses of the inner tank

- Top: 2 mm
- Cylinder: 2,50 mm
- Bottom: 2,50 mm

#### Wall thicknesses of the ornamental wall and insulation

- Cylinder: 2
- Insulation body: yes
- Bottom: 2
- Insulation bottom/sides: yes
- finish of the outer jacket. welded
- Insulation material: Rockwool
- Insulation thickness: 50

#### Dimensions of the tank

- Internal diameter tank: 1.393 mm
- Distance from outlet to ground: 309 mm
- Outer diameter tank: 1.507 mm
- Cylinder height: 2.000 mm
- Feet height: 534 mm
- Total height of tank: 2.900 mm
- Empty weight tank: 540 Kg

**Art.nr.** 1907

## Specifikationer

Antal	1
Isolerad	Ja



Livsmedelsklassad	Ja
Material	Syrafast 316
Modell	Vertikal
Omrörare	Nej
Uppvärmning/kylning	Ja
Volym i liter	3200